

IL1

IP67

NEON SILICONE - XS

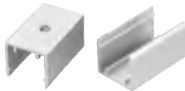
XS neon flex is particularly versatile. With the side and top bending structure design, the flex can be freely shaped towards the left or right, upwards or downwards that enable a wide range of lighting concepts and offer absolutely individual solutions for all applications both indoor and outdoor. Choose from different width and bending structures to find the right model for your projects.

CXGB2016B-R
Top Bend (12W/M)



- Input Voltage : DC 24V
- Wiring : Double-ended
- Wattage : 12W/M
- CRI : Ra≥90
- CCT : Red
- Beam : 110°
- Finish : White
- Material : FPCB and extruded silicone
- Driver : DC 24V constant voltage, remote Driver
- IP rating : IP67

Accessories Options (to be ordered separately)



Aluminum clips



Silicone Light Glue



End cap

Dimensions

Model	Wattage	Length(L)	Width(W)	Hight(H)	Line Art
CXGB2016B	60W	5000mm	20mm	16mm	
CXGB2016B	120W	10000mm	20mm	16mm	
CXGB2016B	180W	15000mm	20mm	16mm	
CXGB2016B	240W	20000mm	20mm	16mm	

Profile Dimensions



Aluminum channel

Length(L)	Width(W)	Height(H)	Line Art
1000mm	23mm	16.5mm	

Minimum cutting unit : 50mm

